

High voltage power supply for ESC (Electrostatic chuck)

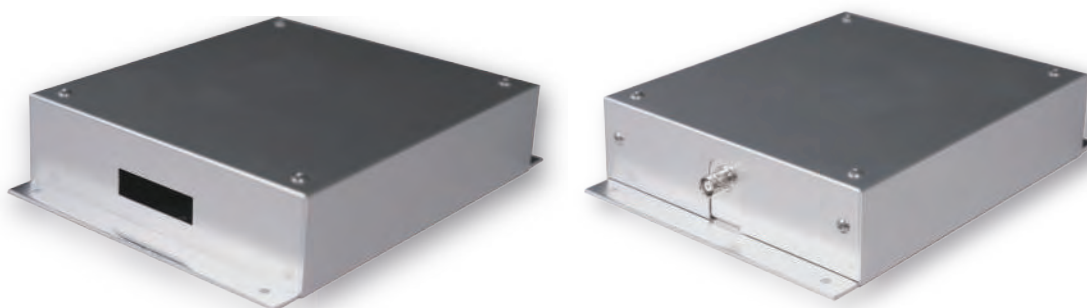
Spec.

✓ The voltage and current values can be customized 'free of charge' within the following range.

- Output voltage: $\pm 1 \sim \pm 5$ kV
- Output current: $1 \sim 10$ mA
- Polarity: Uni-polar, Bi-polar
- Bias voltage (With/Without)
- Center Tap position: Floating / FG / Bias
- Interface: Parallel (Analog I / O), Serial (RS-232C), etc.
- RoHS compliant

Features

- Compatible design (interface / mounting) with existing power supplies is also possible.
- By installing current limit, polarity reversal, discharge function, the dechuck performance of the wafer is improved.
- Suitable for both Coulomb and J-R type.



Abstract

We, PRA will improve the problems of technical applications specific to high-voltage power supplies used in semiconductor manufacturing equipment by addressing them from the design & circuit board design stage according to the individual specifications of each customer. Furthermore, it achieves low cost, short delivery time, and high reliability.

High reliability, long life, and full custom design.

e-mail: pra_sales@pra.jp
<http://www.pra.jp/>

Designed and made in Japan